



9701 Shirley Drive, Allison Park, PA 15101
Call for a personal tour today (412) 841-2862



Homes by The Miller Team



*Generations serving you
for generations to come...*

Hampton Office
4960 Route 8
Allison Park, PA 15101

Office: 412 487-0500
Linda: 412 841-3282
Jaclynn: 412 841-2862



9701 Shirley Drive, Allison Park, PA 15101

Call Linda or Jaclyn Miller: Cell (412) 841-3282 Office (412) 487-0500

**COLDWELL
BANKER** 



9701 Shirley Drive, Allison Park, PA 15101

Call Linda or Jaclyn Miller: Cell (412) 841-3282 Office (412) 487-0500

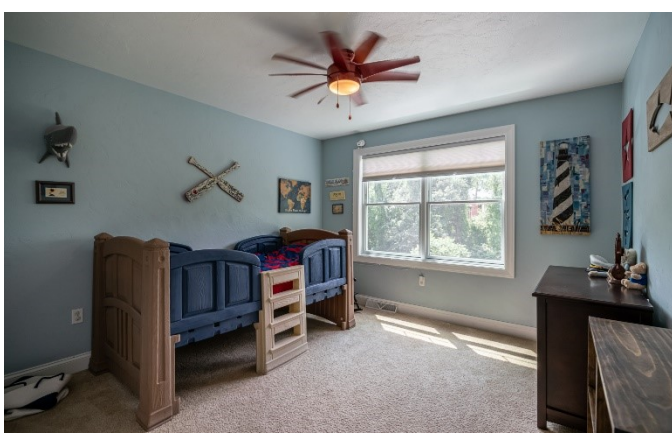
**COLDWELL
BANKER** 



9701 Shirley Drive, Allison Park, PA 15101

Call Linda or Jaclyn Miller: Cell (412) 841-3282 Office (412) 487-0500

**COLDWELL
BANKER**



9701 Shirley Drive, Allison Park, PA 15101
Call Linda or Jaclyn Miller: Cell (412) 841-3282 Office (412) 487-0500



9701 Shirley Drive, Allison Park, PA 15101

Call Linda or Jaclyn Miller: Cell (412) 841-3282 Office (412) 487-0500

**COLDWELL
BANKER**



INTERIOR

Number of Rooms: 14

Interior Features: Jetted Tub, Pantry

Fireplace: Yes

Number of Fireplaces: 1

Fireplace(s): Gas

Appliances: Some Gas Appliances, Dishwasher, Disposal, Microwave, Refrigerator, Stove

Flooring: Ceramic Tile, Hardwood, Carpet

ROOMS

BATHROOMS

Total Bathrooms: 4

Full Bathrooms: 3

Half Bathrooms: 1

BEDROOMS

Total Bedrooms: 5

PARKING

Garage: Yes

Attached garage: Yes

Total Spaces: 2

Parking Features: Attached Garage, Garage Door Opener

LOCATION

County: Allegheny-North

Driving Directions: Babcock thru North Park, Left on Emery, Left on Shirley to cul-de-sac

SCHOOL INFORMATION

Elem School District: North Allegheny

Mid School District: North Allegheny

High School District: North Allegheny

HEATING & COOLING

Central air: Yes

Cooling Type: Central Air

Heating Type: Forced Air, Gas

UTILITIES

Sewer: Public Sewer

Water: Public

STRUCTURAL INFORMATION

Architectural Info: Two Story

Architectural Style: Two Story

Construction: Vinyl Siding

Basement Desc.: Finished, Walk-Up Access

Roof: Asphalt

Windows: Multi Pane, Screens

Year Built: 2012

LOT FEATURES

Lot Dimensions: .6773

FINANCIAL CONSIDERATIONS

Tax Amount: \$9,314



All information provided is deemed reliable but is not guaranteed and should be independently verified. No reproduction, distribution, or transmission of this information is permitted without the written permission from the MLS Participant.

*Always
Exceeding
Client
Expectations..*

