



3031 Meyeridge Rd., Pittsburgh, PA 15209
Call for a personal tour today (412) 841-2862



Homes by The Miller Team



*Generations serving you
for generations to come...*

Hampton Office
4960 Route 8
Allison Park, PA 15101

Office: 412 487-0500
Linda: 412 841-3282
Jaclyn: 412 841-2862



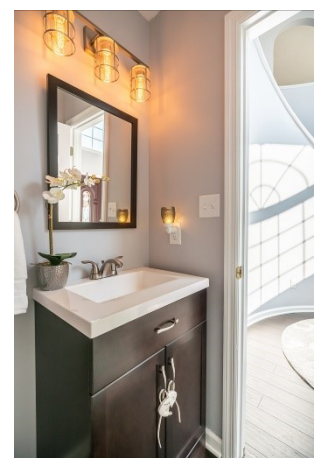
3031 Meyeridge Rd., Pittsburgh, PA 15209
Call Linda or Jaclyn Miller: Cell (412) 841-3282 Office (412) 487-0500

**COLDWELL
BANKER** 



3031 Meyeridge Rd., Pittsburgh, PA 15209
Call Linda or Jaclyn Miller: Cell (412) 841-3282 Office (412) 487-0500

**COLDWELL
BANKER** 



3031 Meyeridge Rd., Pittsburgh, PA 15209
Call Linda or Jaclyn Miller: Cell (412) 841-3282 Office (412) 487-0500

**COLDWELL
BANKER** 



3031 Meyeridge Rd., Pittsburgh, PA 15209
Call Linda or Jaclyn Miller: Cell (412) 841-3282 Office (412) 487-0500

**COLDWELL
BANKER** 



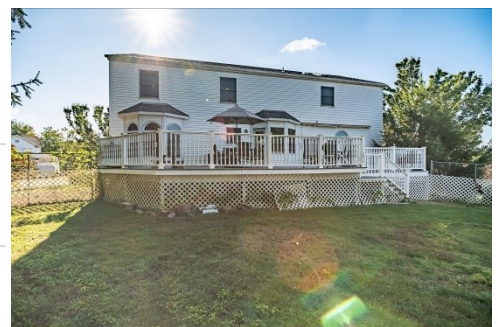
3031 Meyeridge Rd., Pittsburgh, PA 15209
Call Linda or Jaclyn Miller: Cell (412) 841-3282 Office (412) 487-0500



3031 Meyeridge Rd., Pittsburgh, PA 15209

Call Linda or Jaclyn Miller: Cell (412) 841-3282 Office (412) 487-0500

**COLDWELL
BANKER**



INTERIOR

Number of Rooms: 14

Interior Features: Wet Bar, Jetted Tub, Kitchen Island, Pantry

Fireplace: Yes

Number of Fireplaces: 1

Fireplace(s): Gas, Family/Living/Great Room

Appliances: Some Electric Appliances, Dishwasher, Disposal, Microwave, Refrigerator, Stove

Flooring: Ceramic Tile, Hardwood, Carpet

ROOMS

BATHROOMS

Total Bathrooms: 4

Full Bathrooms: 3

Half Bathrooms: 1

BEDROOMS

Total Bedrooms: 5

PARKING

Garage: Yes

Total Spaces: 2

Parking Features: Attached Garage, Garage Door Opener

LOCATION

County: Allegheny-North

Subdivision: MEYERIDGE

Driving Directions: WIBLE RUN RD, L MARTZOLF RD, L MEYERIDGE RD TO END OF STREET

SCHOOL INFORMATION

Elem School District: Shaler Area

Middle School District: Shaler Area

High School District: Shaler Area

HEATING & COOLING

Central air: Yes

Cooling Type: Central Air

Heating Type: Forced Air, Gas

UTILITIES

Sewer: Public Sewer

Water: Public

STRUCTURAL INFORMATION

Architectural Info: French/Provincial, Two Story

Architectural Style: French/Provincial, Two Story

Construction: Brick

Basement Desc.: Finished, Walk-Out Access

Roof: Asphalt

Windows: Multi Pane

Year Built: 1998

LOT FEATURES

Lot Dimensions: 196 x 125 x 125

FINANCIAL CONSIDERATIONS

Tax Amount: \$7,710



All information provided is deemed reliable but is not guaranteed and should be independently verified. No reproduction, distribution, or transmission of this information is permitted without the written permission from the MLS Participant.

*Always
Exceeding
Client
Expectations..*

